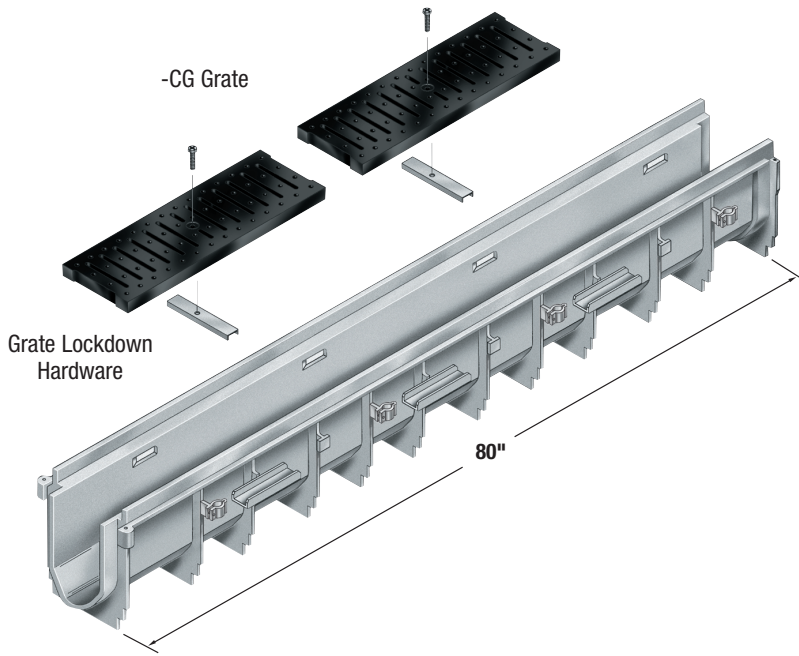


Z886 Perma-Trench HDPE 6" Drain System



Closed End Cap (E1)



End Outlet (2", 3", 4", 6" NH)



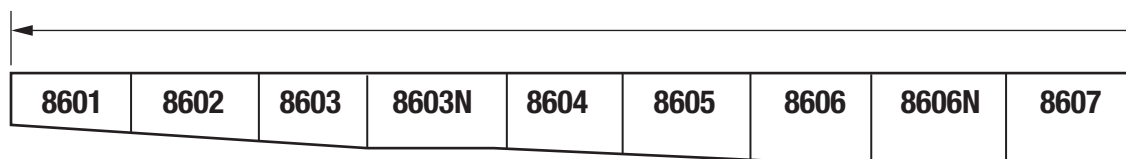
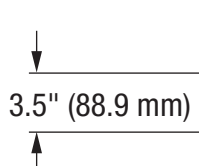
Bottom Outlet (2", 3", 4", 6" NH)



Z886 Dimensional Data

Trench Number	Shallow Invert		Deep Invert		Max. Flow Rate			Approx. Weight (Less Grate)	
	Inches	mm	Inches	mm	GPM	LPS	CFS	Lbs.	Kg
8601	3.50	89	4.10	104	93	6	0.207	14	6.2
8602	4.10	104	4.70	119	122	8	0.272	15	6.8
8603	4.70	119	5.30	135	152	10	0.339	16	7.4
8603N	5.30	135	5.30	135	-	-	-	17	7.7
8604	5.30	135	5.90	150	183	12	0.408	18	8.3
8605	5.90	150	6.50	165	214	14	0.477	20	8.9
8606	6.50	165	7.10	180	245	16	0.546	21	9.5
8606N	7.10	180	7.10	180	-	-	-	22	10.0
8607	7.10	180	7.70	196	276	17	0.615	23	10.6
8608	7.70	196	8.30	211	308	19	0.686	25	11.2
8609	8.30	211	8.90	226	339	21	0.755	26	11.8
8610	8.90	226	9.50	241	371	23	0.827	27	12.4
8611	9.50	241	10.10	257	403	26	0.898	29	13.0
8612	10.10	257	10.70	272	435	28	0.969	30	13.6
8612N	10.70	272	10.70	272	-	-	-	30	13.6
8613	10.70	272	11.30	287	467	30	1.041	31	14.2
8614	11.30	287	11.90	302	498	32	1.110	33	14.8
8615	11.90	302	12.50	318	530	34	1.181	34	15.4

Z886 System Profile



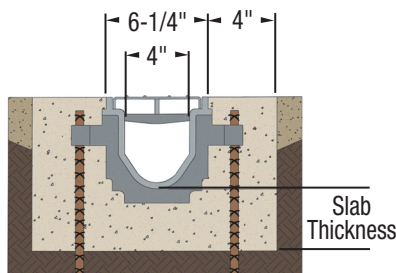
Z886 Applications

Highways	Industrial Parks
Driveways	Chemical Plants
Kitchens	Food Processing
Pools	Shopping Malls
Parking Lots	Industrial Plants
Gas Stations	Pharmaceuticals
Airports	Amusement Parks
Airplane Hangars	

Features and Benefits

- 80" Modular Channel Sections with 20" Grates
- .75% Built-In Slope – Handles greater flows, uniform slope.
- Radiused Bottom – Better flow rate, less solids build-up.
- Smooth High Density Polyethylene Structural Composite Interior – 0% water absorption.
- Durable and Lightweight – Strong corrosion-resistant material.
- Extra Long Runs – Sidewall extensions allow pre-slope runs longer than 120 feet.
- Variety of Gratings
- Grate Options – Available in H-20, FAA, ADA. See pages 22-23.

Installation Specification

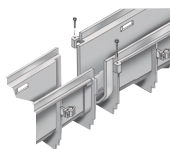


4" Throat / 6" Overall Width

Z886 System Highlights



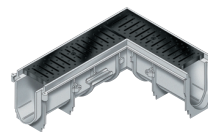
Integral Rebar Clips



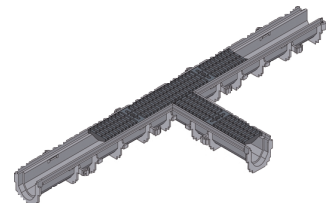
Mechanical Overlap Connection



Optional -HD Frame Assembly



90° Fabrication



Tee Fabrication

Engineering Specification Channels shall be 80" long, 6" wide, and have a 4" wide throat. Modular channel sections shall be made of High Density Polyethylene (HDPE), have interlocking ends, and radiused bottom. Channel shall be provided either flat (neutral) or with a .75% built-in slope. Channels shall be available with inverts ranging from 3.5" to 12.50". Channels shall have clips molded into the sides of the channel to accommodate vertical rebar for positioning and anchoring purposes. Choice of class A, B, C, D, E, and F grates shall be available with H-20 and/or FAA load ratings and/or ADA compliance with mechanical lockdown devices. End caps and catch basins shall be available to complement the channels and grates. End outlets, bottom outlets, and side outlets shall be available in 2", 3", 4", and 6" diameters. Trench drain shall be Flo-Thru model Z886.

